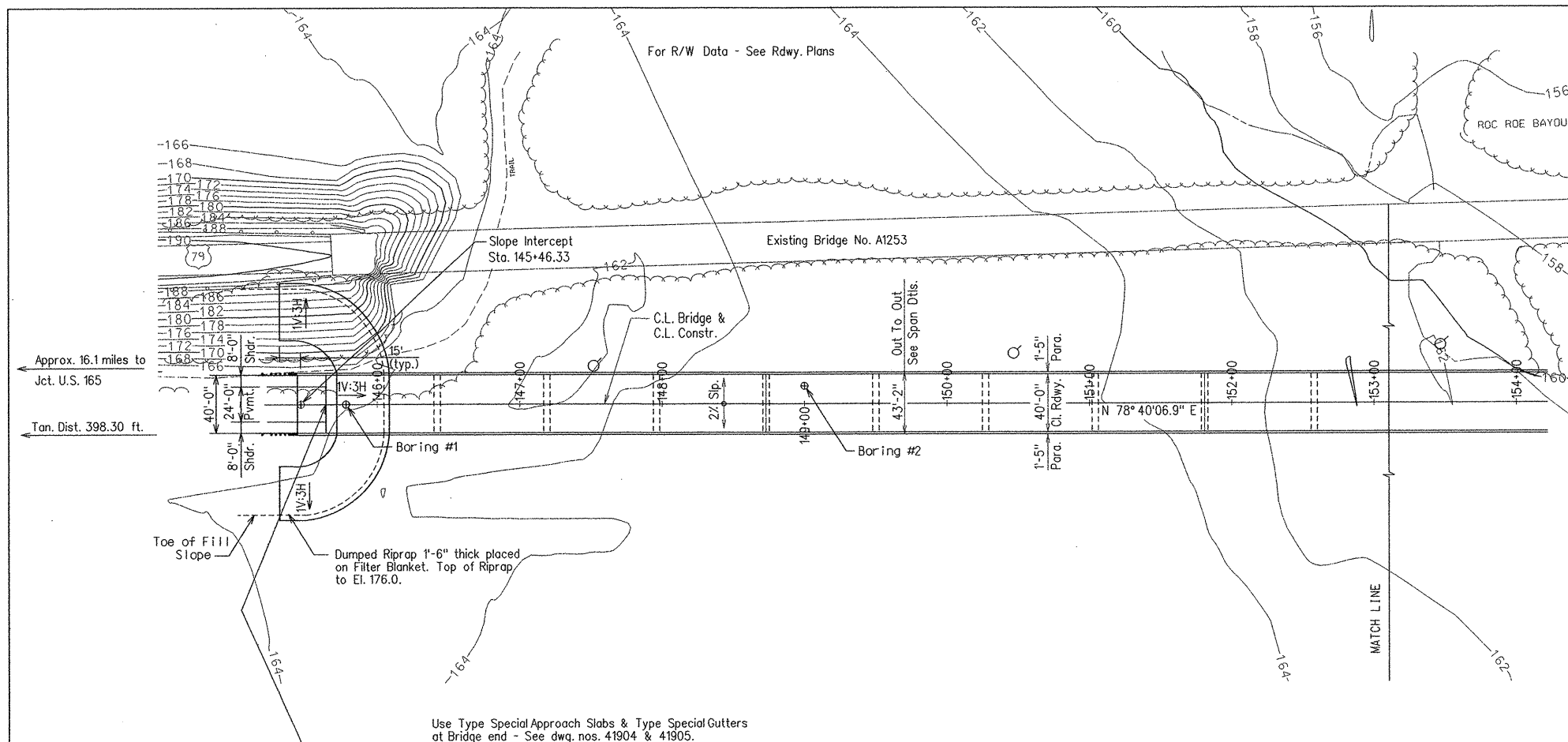


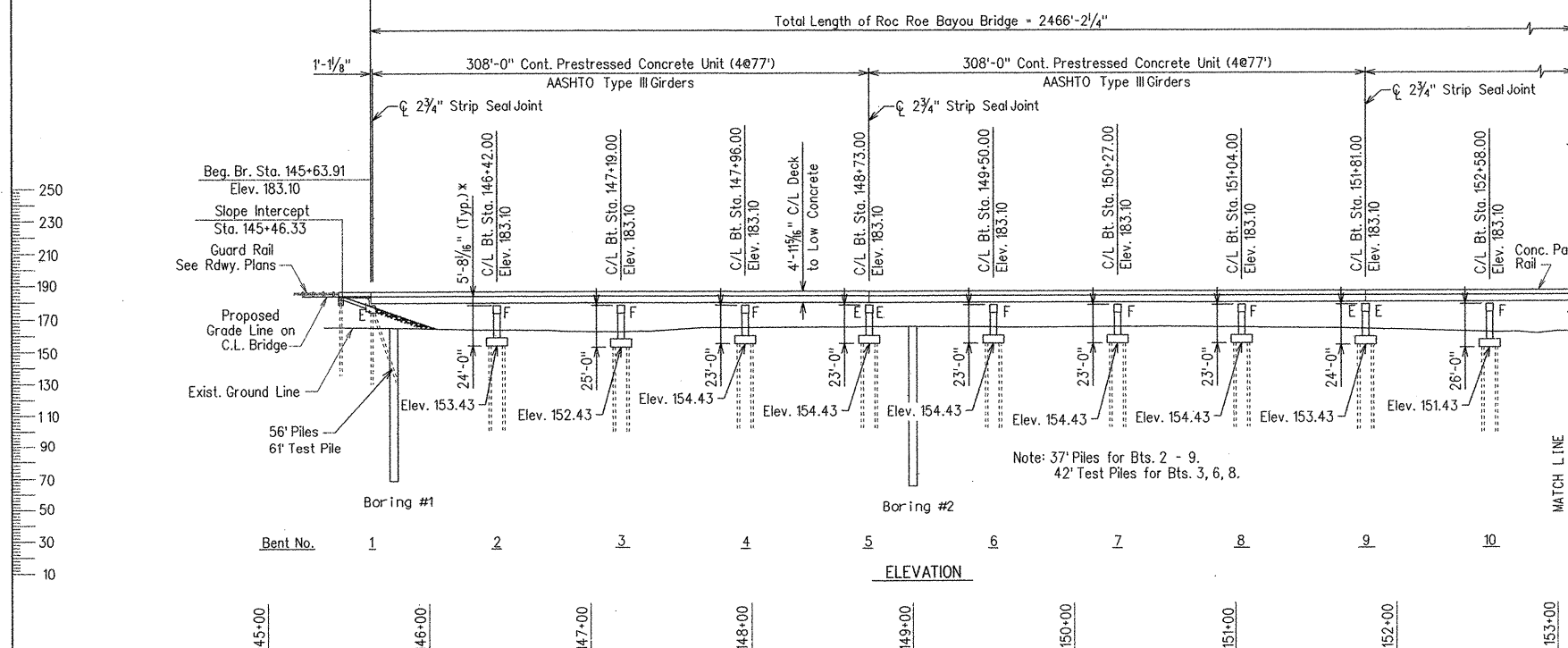
DATE REVISED	DATE FILMED	DATE REVISED	DATE FILMED	FED. ROAD DIST. NO.	STATE	FED. AID PROJ. NO.	SHEET NO.	TOTAL SHEETS
				6	ARK.			
				JOB NO.		110503	64	233
				① 06829		LAYOUT		41868



PLAN

* Top of Deck at C.L. Bridge and C.L. Bent to Low End of Cap

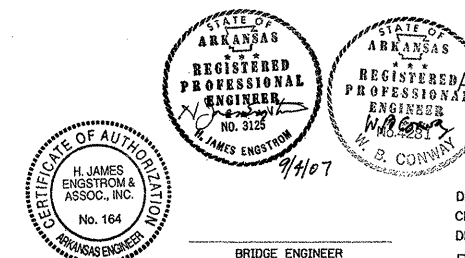
Strip Seal Joints to have 4" movement rating.
Strip Seal Joints are designated as "X" Strip Seal Joints where "X" represents the "A" dimension at 60 degrees F as shown in the table on dwg. no. 41885.



ELEVATION

Note: See dwgs. no. 41872 - 41873 for Soil Borings & additional data.
See dwg. no. 41871 for General Notes.

ALTERNATE NO. 1
LAYOUT OF BRIDGE OVER ROC ROE BAYOU
(SHEET 1 OF 3)
ROC ROE & WHITE RIVER RELIEF
STRS. & APPRS. (CLARENDON) (F)
MONROE COUNTY
ROUTE 79 SEC. 13
ARIZONA STATE HIGHWAY COMMISSION
LITTLE ROCK, ARK.
Engstrom / Modjeski and Masters



DRAWN BY: LKD/TAD DATE: Feb. 06 FILENAME: b11050311_1.dgn
CHECKED BY: FS DATE: Feb. 06 SCALE: 1" = 50'-0"
DESIGNED BY: YO DATE: Feb. 06
BRIDGE NO. 06829 DRAWING NO. 41868